

II. FLAUTO

YORGO SICILIANOS

KASSANDRA

YORGO SICILIANOS

II. FLAUTO

KASSANDRA

Allegro

1 2 3 4 5 6 7 8 9 10 11 12 13 14 15 16 17 18 19 20 21 22 23 24 28 29 30 31 32 33 34 35 36 37 38 39 40 41 42 43 44 45 46 47 48 49 50 51 52 54 55 56 57 58

ff *ff sempre* *allarg.* *a tempo* *Adagio* *Sostenuto* *poco più mosso* *mf ma dolce* *ritornando al - mf - sostenuto*

II. FLAUTO

2.

65 66 67 68 **10**

78 79 86 90 *tratt. tr.*

ff Allegro agitato

87 88

95 96 98

99 100 102

103 104 105 106

107 108 109 110

111 112 113 116 123

Adagio sostenuto

126 127 131 138 139 **Allegro**

140 141 142 143 144

145 146 147 **ff sempre**

148 149 150 151 152 **f sempre**

II. FLAUTO

3.

Handwritten musical score for Flute II, measures 153 to 263. The score includes various dynamics, articulations, and tempo markings.

Measures 153-180: Dynamics include *ff* and *f*. Tempo markings include *accel.* and *ff*. Measure 178 has a *tr* marking.

Measures 181-191: Dynamics include *ff*. Measure 187 has *(acceler.)* and $\text{♩} = 120$. Measure 191 has *ff*.

Measures 192-202: Tempo marking *Adagio*. Measure 193 has a *6* (sextuplet) marking.

Measures 203-212: Tempo marking *Allegretto*. Dynamics include *poco f*. Measure 211 has *tr* and $\text{♩} = 120$. Measure 212 has *tr*.

Measures 213-218: Measure 214 has a *2* (second) marking. Measure 215 has a *4* (quart) marking. Measure 217 has a *3* (triple) marking. Measure 218 has a *2* (second) marking.

Measures 220-224: Measure 221 has a *3* (triple) marking. Measure 224 has *f*.

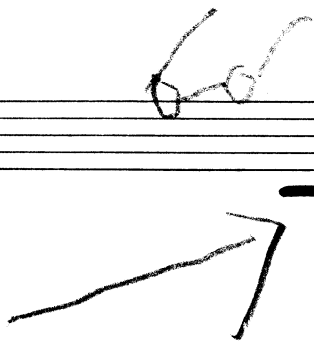
Measures 225-233: Measure 227 has a *3* (triple) marking. Measure 228 has *rit.*. Measure 230 has a *4* (quart) marking. Measure 233 has a *3* (triple) marking. Tempo marking *Poco più calmo*.

Measures 234-247: Measure 234 has a *1* (first) marking. Measure 235 has a *4* (quart) marking. Measure 237 has a *3* (triple) marking. Measure 238 has a *1* (first) marking. Measure 243 has a *3* (triple) marking. Measure 247 has a *3* (triple) marking. Tempo marking *Andante*.

Measures 250-256: Measure 251 has *allarg.*. Measure 252 has a *1* (first) marking. Measure 253 has a *3* (triple) marking. Measure 256 has a *3* (triple) marking. Tempo marking *Sento*.

Measures 259-262: Measure 259 has *ff*. Measure 260 has *mf*. Measure 261 has *p*. Measure 262 has *tr*.

Measure 263: A *2* (second) marking.



II. FLAUTO

2

265 *tr* 266# *tr* 267# *tr* 268# *tr* 269 *trb* 270 *trb*

271 *tr* 272 274# *tr* 275 276 *trb* 277

278 *tr* 279 *tr* 280 *tr* 281 283 *Meno allegro*

288 289 300 *Andante* 305 307 308

310 311 312 316 317 319# *ff*

320 321 325 330 *Allegro non troppo* 332 334 *ff* 6 *Andante* 6

343 344 345 346 349 *Solo* *Andante*

350 351 *p* 6 352 353# *p* 6 354

355 360 368 *sfpp* 369 371 372 10

382 *Piu lento, senza misura* 383 *Andante* 395 412

414 *Solo* 415 416 417

418 *Piu lento, senza misura* 419 *Andante sostenuto* 423 427

5.

II. FLAUTO

Solo

429 435 436 445 446 447

448 450 452 453 454 456 458

459 460 461 467 468

Sento senza misura *Adagio non troppo*

(Sopr-solo)

469 474 475 477

Sprechstimme

(Sopr-solo)

501 506 507 508 510

Lo stesso tempo (♩ = 80)

ff

520 527 528 529 530 531

poco animando

fp

532 533 534 535

ritornando

trb

Tempo

543 544 547 548 549

trb

f

550 556 557 559 563

allarg.

♩ = 63

♩ = 92

564 567 568 571 572 576

Adagio

trb. obj

577 578 590 591 593

Allegro moderato

p

mf

594 595 596 597

mf

p

II. FLAUTO

598 *tr* *f* 599 *tr* 600 *Più allegro* 6. **17**

618 **8** 626 627 634 635

641 642 643 644

645 *ff* 646 647 648 649

650 *sf* *Adagio misterioso* 662 **10** 664 **2** 665 **1** **1** **2**

666 667 668 669 682 685 686

687 *animando* ($\text{♩} = \text{♩}$) *a tempo* 688 689 690 692 693 *rit.*

695 *Allegro scherzando* *poco f* 696 697 699 700

701 703 704 705 706

707 708 709 710

711 *f sempre* *poco f* *tr* 712 713 714

715 716 717 718 720 *tr* *f*

II. FLAUTO

7.

721 *tr* 722 *trb* 723 724

725 726 *trb* 727 *trb* 728 *tr*

729 730 731 732

733 734 735 736 737 738

739 742 *ff* 743 760 *Sento* 764 765

780 *Allegro* 781 *Sento* 784 *da duo* 785

798 *p* 799 *mp* 800 801 802

807 *molto f* *Allegro con fuoco* 808 809 812

813 *sf* 814 815 816 817

818 819 821 822

823 824 825 827

828 829 830 831 832

II. FLAUTO

8.

Handwritten musical score for Flute II, measures 833-891. The score is written on ten staves. It features various musical notations including notes, rests, and dynamic markings such as *f*, *mf*, and *sf*. Measure numbers are indicated above the notes. The score includes complex rhythmic patterns, including sixteenth-note runs and triplet markings. There are also some handwritten annotations and corrections throughout the piece.

II. FLAUTO

9.

893 *f.* 894 *f.* 895 *f.* 896 *f.* 897 *f.*

898 899 906 907 908

909 910 911 912

913 914 915 916

917 925 926 927

928 929 930

931(6) 932 rit. 935 Adagio 948 Allegro 956

957 958 965 966 967 969 970

971 974 $\text{♩} = 96$ 979 rit. 982 Adagio 987 988

996 1000 1011 1012

1013 1014 1015 1022 affrett. 1023 a tempo

1039 1040