

Γ. Γ. ΣΙΣΛΙΑΝΟΣ

CELESTA

Η ΦΩΤΙΑ

Sento (♩=44)

1 5 (solo) 6 *l.v*

7 10 (whip.) 14 (Xylo.) 20 (Xylo-Pfi) 27 (Temple-Bl.)

32 (Gong) 34 (Pfo.) 35 (Temple-Bl.) 41 (Camb.) 43 *Allegretto* (♩=88)

47 (suspense) 48 51 (solo) 52 53

54 55 rit. 57 a tempo 65 (Timp.) 66 (Tutti) 69 ritornando al

71 *I^o Tempo* (♩=44) 75 (Gong) 77 (Pfo-Glock.) 78

79 80 82

83 85 (xylo) 89 (xylo) 96 (Camb.) (attacca)

© 1979 by Yorgo Sirlianos
Athens - GREECE

ΠΡΩΤΗ ΣΚΗΝΗ - SCENE I

Lo stesso tempo

99



Cacet

(attacca)

ΔΕΥΤΕΡΗ ΣΚΗΝΗ - SCENE II

139 Allegro



Cacet

(attacca)

ΤΡΙΤΗ ΣΚΗΝΗ - SCENE III

194

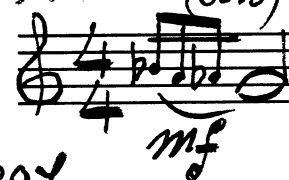


Cacet

(attacca)

ΤΕΤΑΡΤΗ ΣΚΗΝΗ - SCENE IV

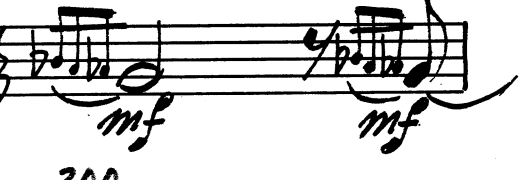
294 ♩ = 54
(solo)



295



296



297

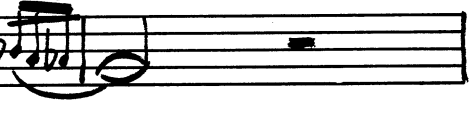


298

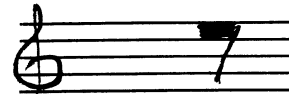


299

300



301



308 (Glock.)



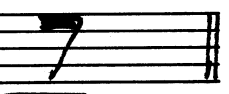
317 (Flexaton)



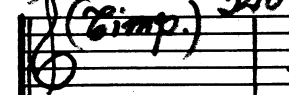
320 (Glock.)



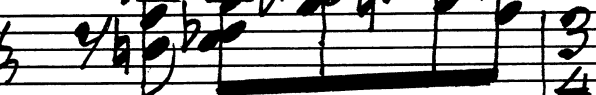
332 (Glock.)



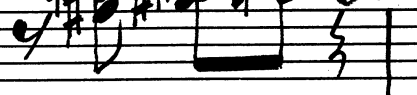
339 Più mosso (♩ = 76)
(Cimp.)



340



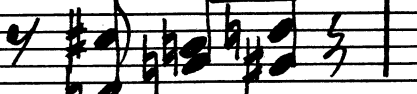
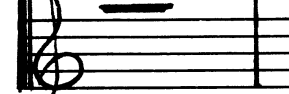
341



rit

342

poco meno (♩ = 66)
343 allarg. al. -



CELESTA

3.

Molto lento (♩ = 44)

344

345

346

mf

1

(attacca)

ΠΕΜΠΤΗ ΣΚΗΝΗ - SCENE V

347

Cacet

(attacca)

ΕΚΤΗ ΣΚΗΝΗ - SCENE VI

416

Cacet

(attacca)

ΕΒΔΟΜΗ ΣΚΗΝΗ - SCENE VII

♩ = 60 (in 6)

486 1

487 (timp.) 2

489 (Gong - timp.) 2

491 (timp.) 1

492 ♩ = 60 (in 3) 1

CELESTA

4

493 *legato* 6 6 6 494

495 496

497 498

499 500

501

Tacet sino al fine

FINE