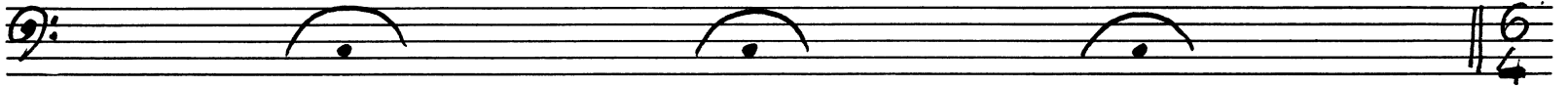


YORGO SICILIANOS

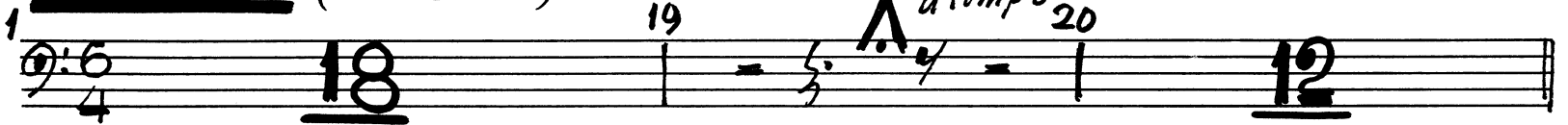
CONTRA-FAGOTTO

EPITAPH

Molto lento, senza misura



Molto lento (♩=68, in 6)

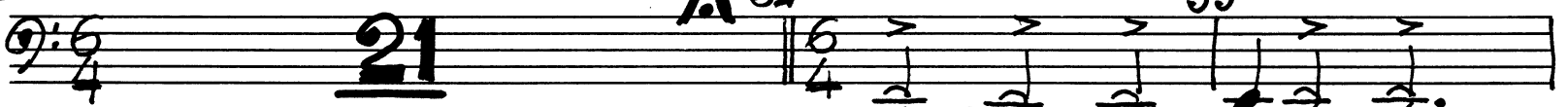


32 Poco più lento, senza misura

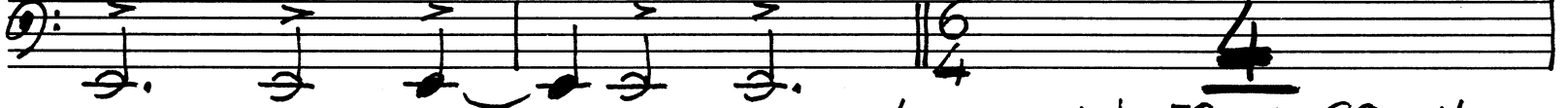


33 ♩=72 (in 6)

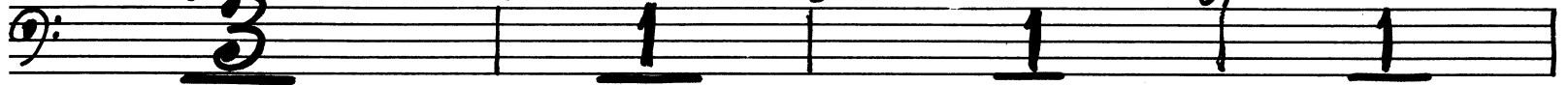
Molto sost^o (♩=52, in 6)



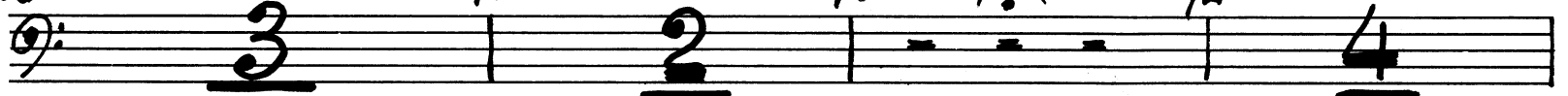
56 Appassionato (♩=60, in 6)



62 *stringendo* - - **65** *ritornando* - **66** *a tempo. rit.* ♩=52, ♩=60 *rit.* - -



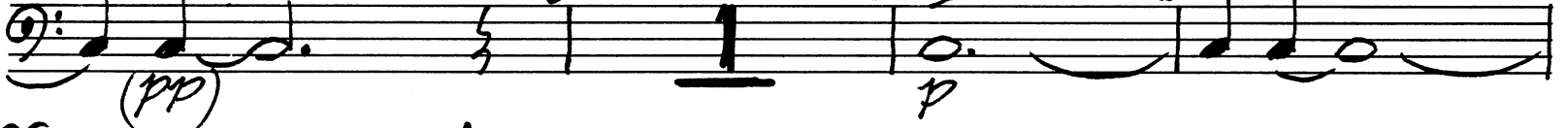
68 ♩=52 *rit.* $\frac{1}{2}$ ♩=44 $\frac{1}{3}$ $\frac{1}{4}$ ♩=60 $\frac{1}{4}$



78 *allarg.* ... **79** *a tempo* **80** *poco* > **81**



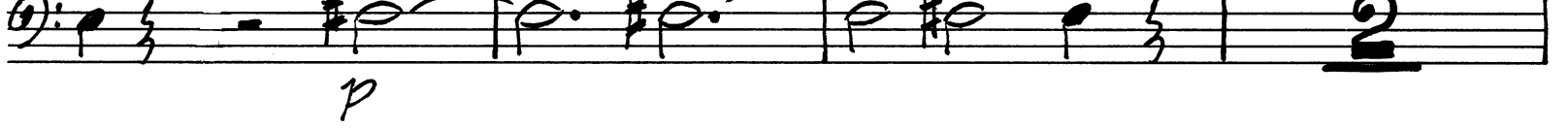
82 **83** **84** > **85**



86 **87** **88** **89**



90 **91** **92** **93**



CONTRA-FAGOTTO

2.

95 *a tempo* 96 *sf stringendo - poco - a - poco*

103 (string.) *mf cresc. ff sempre* *trb* 104 105 *sf*

106 *tr* 107 108

109 *ff* 110 *Andante (cresc. ff) (♩ = 76)* 111 112 *(♩ = 8)*

113 *ff sempre* 114 115 116 117 118

120 121 122 123 124 125 126

127 128 129 130 131 132 *rit. . .*

133 *(rit.) ♩ = 60* 134 *♩ = 72 (in 12)* 135

138 139 *poco rit. a tempo* 140 *f p pp* 141 *pp* 142 *(pp sempre)*

143 144

143 144 *FINE*