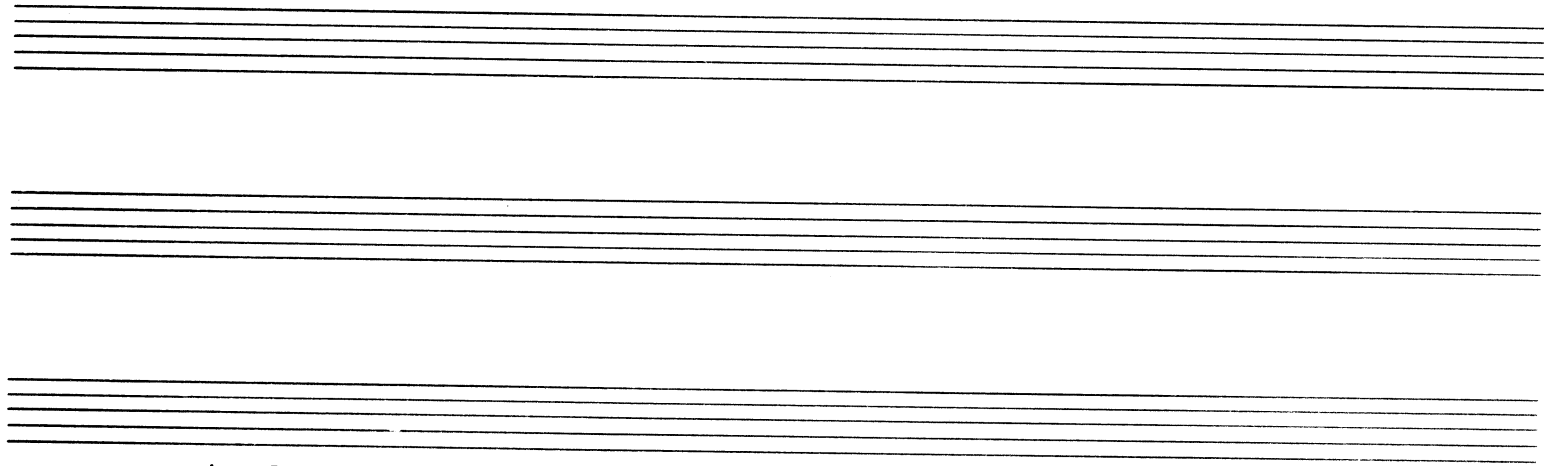


PERCUSSION



$\text{♩} = 60$

Xylo.

Vibraf. (motor on.)

Frusta

2 3 4 5 6 7

Pt. 1
2 Cam.
Cassa

(Hardheaded sticks) (wooden stick)

8 11 12 13 14

Xylo.

Vibraf. (motor off)

(Hardheaded sticks)

B-Cam

Pt. 1

Campane

ppp *mp* *p*

15 16

Xylo.

Vibraf.

(motor on.)

Camp.

p *p* *f* *o*

PERCUSSION

3.

♩ = 104

Campane

35 36 37 38 39

I. $\frac{6}{8}$ $\frac{4}{8}$ $\frac{4}{8}$ $\frac{3}{4}$ $\frac{7}{8}$

II. $\frac{6}{8}$ $\frac{4}{8}$ $\frac{4}{8}$ $\frac{3}{4}$ $\frac{7}{8}$

III. $\frac{6}{8}$ $\frac{4}{8}$ $\frac{4}{8}$ $\frac{3}{4}$ $\frac{7}{8}$

Gran Cassa
(Hardheaded sticks)

pp *cresc.* *mf cresc.*

(Vibraf.) (motor off.)

♩ = 80

40 41 42 43

I. $\frac{6}{8}$ $\frac{7}{8}$ $\frac{3}{4}$ $\frac{2}{4}$

II. $\frac{6}{8}$ $\frac{7}{8}$ $\frac{3}{4}$ $\frac{2}{4}$

III. $\frac{6}{8}$ $\frac{7}{8}$ $\frac{3}{4}$ $\frac{2}{4}$

Camburo 2

mf *f* *mf* *tr*

(cresc.) *cresc.* *sub.p*

Pt. 1

♩ = 48 (Molto sostenuto) 10: d. 45

♩ = 72 46

♩ = 66 (Rit.) 47

I. $\frac{6}{8}$ $\frac{6}{8}$ $\frac{3}{4}$ $\frac{3}{4}$

II. $\frac{6}{8}$ $\frac{6}{8}$ $\frac{3}{4}$ $\frac{3}{4}$

III. $\frac{6}{8}$ $\frac{6}{8}$ $\frac{3}{4}$ $\frac{3}{4}$

f *ff* *tr* *tr* *ff*

Cam-Cam.

(molto) *fff* *fff*

(solo) Gr. Cassa Camb. 2.

♩ = 66 (a 60) 49

♩ = 66 (a 60) 51

♩ = 66 (a 60) 52

I. $\frac{6}{8}$ $\frac{4}{4}$ $\frac{4}{4}$

II. $\frac{6}{8}$ $\frac{4}{4}$ $\frac{4}{4}$

III. $\frac{6}{8}$ $\frac{4}{4}$ $\frac{4}{4}$

Cam. 1 Gr. Cassa

fff *fff* *ff* *fff* *fff* *fff* *fff*

arzo *5* *5* *7* *3* *5*

Campane

PERCUSSION

4.

53 (Camp.) 54 55

I. *f*

II. *ff* *l.v.* *ff* *f*

Cam-Cam Cassa Camb.2

56 Xylo. 57 58

I. *mf*

II. *p* *(p)*

Vibraf.

5 7 3 5

Pt. 1 *p*

Pt. 2 *p*

Cassa *f*

C.C. *l.v.* *5*

59 60

I. *p*

II. *p*

(Xylo.)

lunga a *l.v.* *p* *p* *mp* *p* *mf* *f* *molto* *ff*

Pt. 1 *p* *mp* *p* *mf* *f* *molto* *ff*

Pt. 2 *p* *mp* *p* *mf* *f* *molto* *ff*

Cassa *mp* *p* *mf* *f* *molto* *ff*

C.C. *mp* *p* *mf* *f* *molto* *ff*

lunga *a l.v.* *p* *p* *mp* *p* *mf* *f* *molto* *ff*

allarg. molto

61 *a 6^o* Xylo. 62 Campane 63

I. *ff* *ff*

II. Pt. 3 (wooden stick) *l.v.* *ffff*

III. Pt. 1 2 3 *mf* *(mf)* *Molto* *ff* *Ritard. a 6^o*

Cam. 1 2 *mf* *(mf)* *Molto* *ff*

Cassa

C.C. *pp* *p* *mp*

64 (Campane) 65

I. *Ritard.* *a 6^o* *lunga* *lunga* *a 6^o* (*♩ = 66*)

II. Cam. 1 2 *ff* *ff* *lunga* *lunga* *a 6^o* (*♩ = 66*)

Cassa *ff* *ff* *lunga* *lunga* *a 6^o* (*♩ = 66*)

C.C. *ff* *ff* *lunga* *lunga* *a 6^o* (*♩ = 66*)

66 Xylo. 67 *a 6^o*

I. *p* *a 6^o*

II. Pt. 1 2 3 *molto lunga* *breve a 6^o*

Cam. 1 2 *f* *ff* *fff* *p* *l.v.*

Cassa *f* *ff* *fff* *p* *l.v.*

C.C. *f* *ff* *fff* *p* *l.v.*

6.

PERCUSSION

68

Vibraf. 69

p a 60

Pt. 1 2 3

Tamb. 1 2

Cassa

C.B.

(ppp) mp

p

l.v.

p

Molto

70

Xylo.

72

(Vibraf.)

Campane

Pt. 1 2 3

Tamb. 1 2

Cassa

73

(Xylo.)

ff

ff

ff

ff

ff

ff

PERCUSSION

Strin - gen - do poco - a poco fino al ♩ = 80 7.

74

Pt. 1/2/3

Camb. 1/2

Cassa

C.C.

mp

76 *cresc.* 5. 7. *f cresc.* 5. *ff cresc.* 5.

I. Xylo. *ff*

II. Vibraf. *ff*

III. Cam-Cam. *ff*

77 78 79 *Piu lento* (♩ = 52) 80 81

83 ♩ = 104 (Allegro)

I. Xylo. *ff* → *p* → *pp*

II. Camburo 1 (common wooden sticks) *ff* → *p* → *ff*

84 85 86 88 89

90 (Xylo.) 91

92 *Meno allegro* (♩ = 80)

I. Xylo. *ff* → *p*

II. (Vibraf.) *ff*

III. (with 2 softheaded sticks) Pt. 3. tr. *p* → *mf* → *p* Cassa

93 94 95 96

8. Più mosso

PERCUSSION

Ancora più mosso

97 string. 102 (Xylo) stringendo 103 ff 104 p 105 mf

II. III.

106 (Xylo.) stringendo 107 f 108

Vibraf. Campana

Bamb. 1 2 Cassa mf

109 (string.) 110 f 111 112 = 120 p mf

II. Vibrafono

Bamb. 1 2 Cassa f

113 Sostenuto 114 f molto appassionato 115 8/8 117 118

II. (Vibraf) f

Bamb. 1 2 Cassa G.G. fff i.v.

119 Xylo.

I

120 *ff*

121

122 *ff*

II

Pt. 1 2 3

Camb. 1 2

Cassa

P.P.

f cresc.

mf

f cresc.

l.v.

123 (Xylo.)

I

124 *ff*

125 Poco meno

126

127

II

Pt. 1 2 3

Camb. 1 2

Cassa

P.P.

f cresc.

mf

sub. mf

ff

pp

l.v.

(Bacch. di legno) (solo)

128 Allarg. 129

I

130 *d = 112* String.

131

Xylo.

132 *f*

134 *ff* *d = 120*

II

Pt. 1 2 3

Camb. 1 2

Cassa

P.P.

ff

2

3

8

PERCUSSION

♩.72 10.

♩=80

135 (Xylo.)

136

I.

II.

I.

II.