

YORGO SICILIANOS

Cello

# Eight Children's Miniatures

## 1.

*Molto lento*

Musical score for the first miniature, 'Molto lento'. The score is written in bass clef with a 2/4 time signature. It consists of three staves of music. The first staff contains measures 1 through 5, with measure numbers 1, 2, 3, 4, and 5 written above the notes. The second staff contains measures 6 through 9, with measure numbers 6, 7, 8, and 9 written above the notes. The third staff contains measures 10 through 11, with measure numbers 10 and 11 written above the notes. The score includes dynamic markings such as *p*, *cresc.*, and *f*. The piece concludes with the instruction *attacca*.

## 2.

*Alla Marcia*

Musical score for the second miniature, 'Alla Marcia'. The score is written in bass clef with a 2/4 time signature. It consists of five staves of music. The first staff contains measures 1 through 5, with measure numbers 1, 2, 3, 4, and 5 written above the notes. The second staff contains measures 6 through 12, with measure numbers 6, 8, 9, 10, 11, and 12 written above the notes. The third staff contains measures 13 through 22, with measure numbers 13, 14, 15, 16, 21, and 22 written above the notes. The fourth staff contains measures 23 through 32, with measure numbers 23, 24, 25, 26, 27, 29, 30, 31, and 32 written above the notes. The fifth staff contains measures 33 through 40, with measure numbers 33, 34, 35, 36, 37, 38, 39, and 40 written above the notes. The score includes dynamic markings such as *p*, *pp*, *pizz.*, *mf*, *p*, *ritard.*, and *morendo*. The piece concludes with the instruction *attacca*.

Cello

3.

1 Allegro vivo

Musical staff 1 for section 3, measures 1-6. The staff is in bass clef with a key signature of one sharp (F#) and a time signature of 7/8. Measure 1 contains a whole note chord. Measures 2-6 contain eighth notes with accents and dynamic markings of *ff*.

Musical staff 2 for section 3, measures 7-9. The staff is in bass clef with a key signature of one sharp (F#) and a time signature of 7/8. Measure 7 contains a whole note chord. Measures 8-9 contain eighth notes with accents and dynamic markings of *ff*.

Musical staff 3 for section 3, measures 14-16. The staff is in bass clef with a key signature of one sharp (F#) and a time signature of 7/8. Measure 14 contains a whole note chord with a trill (tr.) and dynamic marking of *ff*. Measure 15 contains a whole note chord with dynamic marking of *p*. Measure 16 contains a whole note chord. The word "div." is written to the left of the staff. The word "attacca" is written at the end of the staff.

4.

Tacet

attacca

5.

Andante comodo con gracia

Musical staff 1 for section 5, measures 1-4. The staff is in bass clef with a key signature of one sharp (F#) and a time signature of 2/4. Measure 1 contains a whole note chord. Measures 2-4 contain eighth notes with accents and dynamic markings of *p*.

Musical staff 2 for section 5, measures 5-8. The staff is in bass clef with a key signature of one sharp (F#) and a time signature of 2/4. Measure 5 contains a whole note chord with dynamic marking of *p*. Measure 6 contains a whole note chord with dynamic marking of *p*. Measure 7 contains a whole note chord with dynamic marking of *p*. Measure 8 contains a whole note chord with dynamic marking of *p*. The word "div." is written above the staff.

Musical staff 3 for section 5, measures 9-12. The staff is in bass clef with a key signature of one sharp (F#) and a time signature of 2/4. Measure 9 contains a whole note chord with dynamic marking of *mp*. Measure 10 contains a whole note chord with dynamic marking of *mp*. Measure 11 contains a whole note chord with dynamic marking of *p*. Measure 12 contains a whole note chord with dynamic marking of *f*. The word "(div.)" is written to the left of the staff. The word "cres-cen-do" is written below the staff.

3.

# Cello

Uniss.

13 16 17 19 20

*Più mosso, poco agitato*

21 22 23

24 25 26 27

28 29 30 31

32 33 34 35

36 37 38 43

ritornando - - al **I<sup>o</sup> Tempo**

44 45 46

6.

Moderato misterioso

1 7 10 14

Vivo

15 16 24 25 26

Cello

27 *p* 28 *V* 29 *mf* *p*

30 31 32 *fp* *f*

33 34 *mf* 35 *f* *mf*

36 37 38 *Stringendo*  
*cres. - - con - do*

39 *(string.)* 40 41 *(cresc.)*

42 *(string.)* 43 *Piu mosso* *a 60*  
*(cresc.)* *ff*

45 46 *(non div.)* 47 48 49 *sff secco* *ff* *ff*

50 51 *V* 52 *(non div.)* 53 *sff secco* *sff secco* *sff secco*

54 *V* 55 *gliss* 56 57 58 *pizz.* 59 *ff* *sff*

*Tempo di valzer*

1 *Con sord.* *Arco* *V* 12 13 14 15 *p dolce*

16 17 18 19 20 21 *mf* *p*

5.

# Cello

*con sord.*

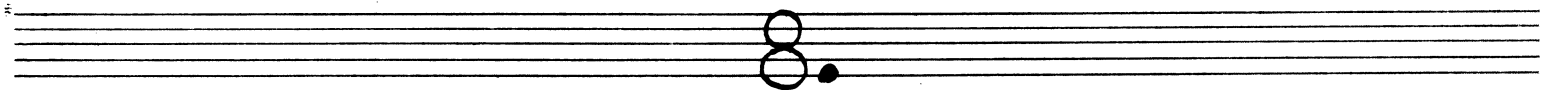
24 36 38 39 40

41 42 43 44 45 46 *poco sost<sup>o</sup>*

47 *a 80* 48 49 50 51 52

53 54 55 56 57 58 59 60

61 *(via sord.)* 71 *Più lento*



# Sarghetto

1 2 3 4 5

6 7 8 9

10 11 12 13 14

15 16 17 18 19 20

21 22 23 24 25

26 27 28 29

*y Allarg.* *Più lento*

*pp*