

I oboe

Yorgo Sicilianos

CONCERTO

Powz violoncello et orchestre

Moderato

all^o

7 8 5 4

17 3

f

27 5

38 10 48 8

59 3 5 3/4 4

1 3/4 2 4/4 1 3/4 1

3 76 3/4 1 6

5

C 5

Musical staff with notes, dynamics *f*, and *flegg.*

Musical staff with measure numbers 93 and 94, dynamics *sf* and *f*.

Musical staff with measure numbers 99 and 100, and time signatures $\frac{3}{4}$ and $\frac{4}{4}$.

Musical staff with notes, dynamics *f*, and a key signature change to one sharp.

Musical staff with measure numbers 108 and 109, and time signatures $\frac{3}{4}$ and $\frac{4}{4}$.

Musical staff with measure number 116, dynamics *ff*, and time signature $\frac{3}{4}$.

Musical staff with measure number 121, dynamics *mf*, *p*, and *(p)*, and a triplet of sixteenth notes.

Musical staff with measure number 128, dynamics *p*, *f*, and *ff*, and the instruction *Poco meno all.^o*

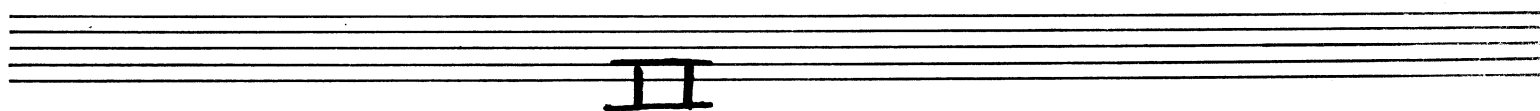
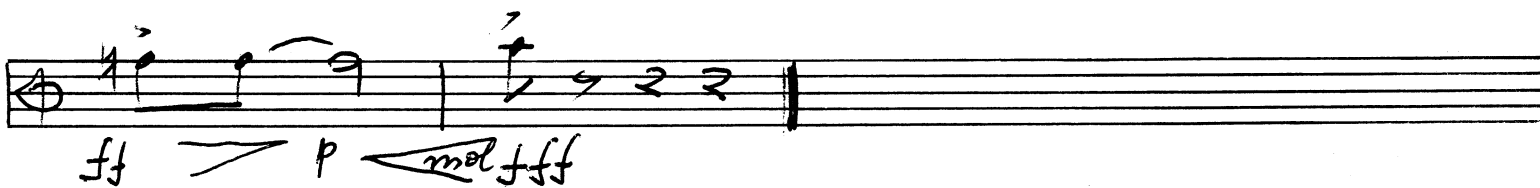
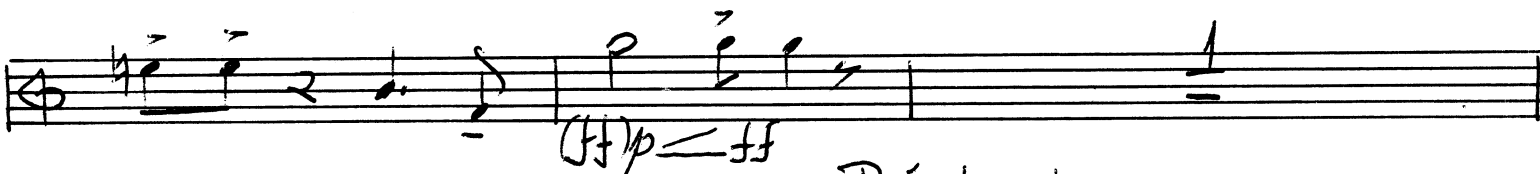
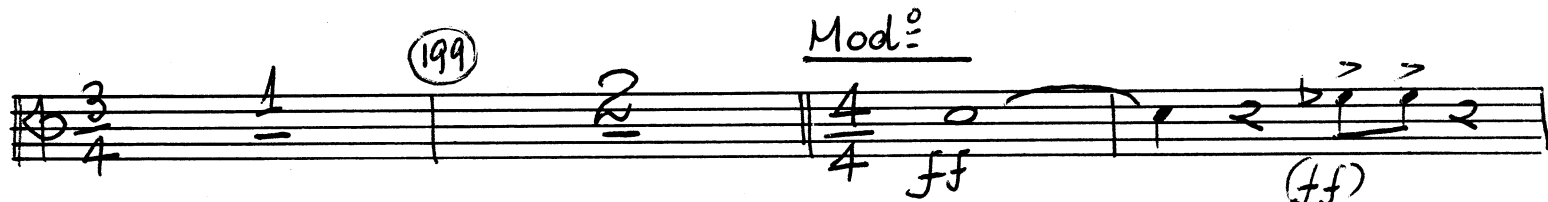
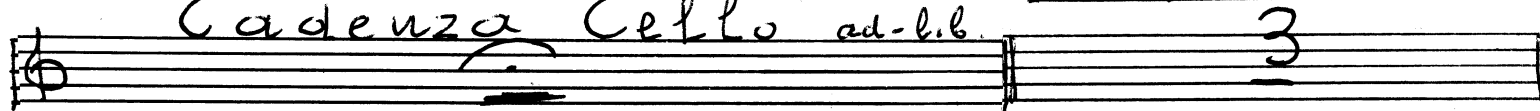
Musical staff with measure number 138, dynamics *ff*, and the instruction *I: zempo*.

Musical staff with measure numbers 140 and 149.

Musical staff with measure numbers 159 and 167.

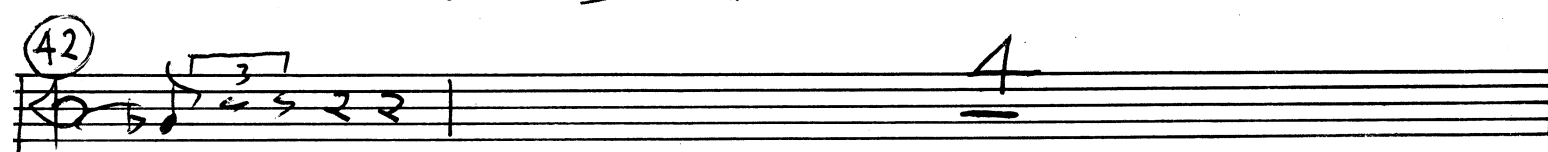
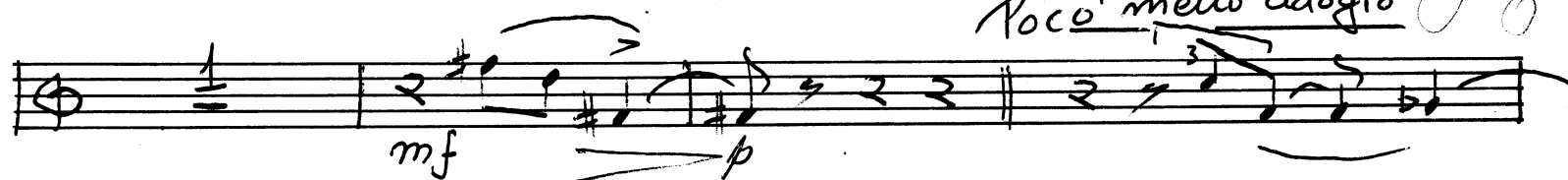
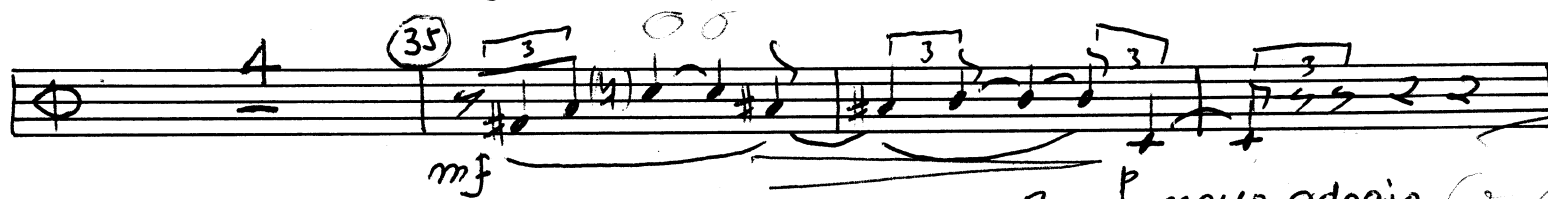
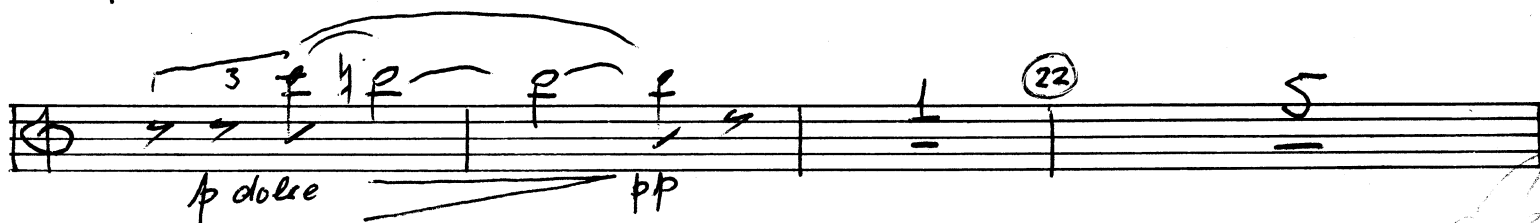
Musical staff with measure numbers 178 and 184, and time signature $\frac{4}{4}$.

Cadenza Cello ad-lib. *a tempo (all.)*



II

Molto Adagio



32 3 38 2 2

mf dolce 3 f

2 48 10

58 8 66 1 ff ff

Meno mosso 3 73 8

81 9 90 *ffp* *I: tempo* 4

97 2/8 1 3/8 9

107 4 111 4/8 1 *Assai meno all:* ff

Ancora meno 3/8 5 *Adagio* 120 *I: tempo* 8

129 2 p 3

137 8 145 7 152 6

158 4 162 21

V. 5

183

Piu Lento

194

A musical staff with a treble clef and a 4/4 time signature. It contains three notes: a quarter note '1', a quarter note '2', and a quarter note '3'. The notes are positioned on the first, second, and third lines of the staff respectively. A double bar line is placed between the first and second notes.

197

A musical staff with a treble clef and a 4/4 time signature. It contains two notes: a quarter note '1' and a quarter note '2'. The notes are positioned on the first and second lines of the staff respectively. A double bar line is placed between the two notes.

An empty musical staff with five lines.

An empty musical staff with five lines.

An empty musical staff with five lines.

An empty musical staff with five lines.

An empty musical staff with five lines.

An empty musical staff with five lines.

An empty musical staff with five lines.

An empty musical staff with five lines.

An empty musical staff with five lines.

An empty musical staff with five lines.