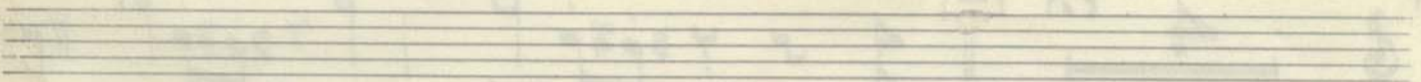
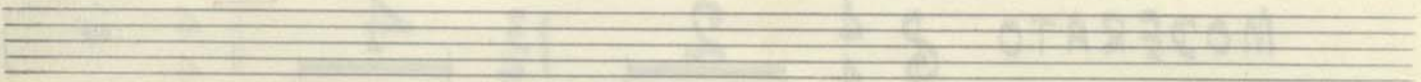
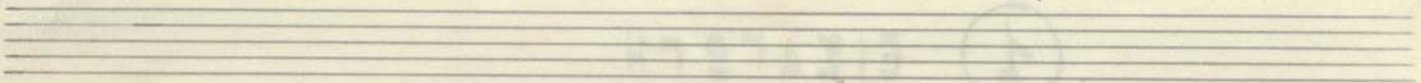
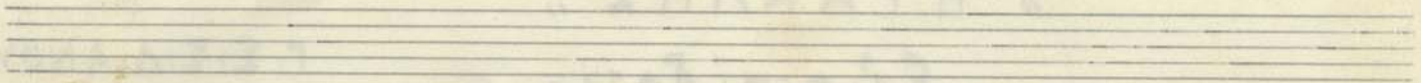


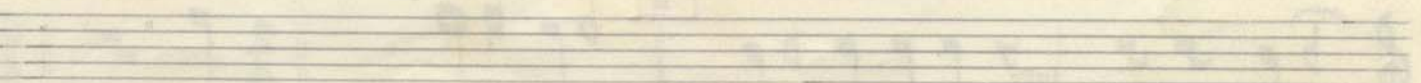
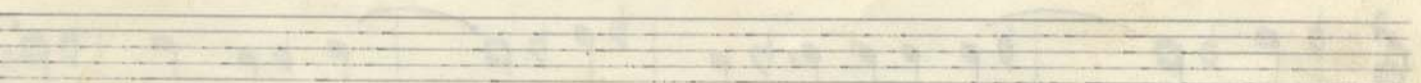
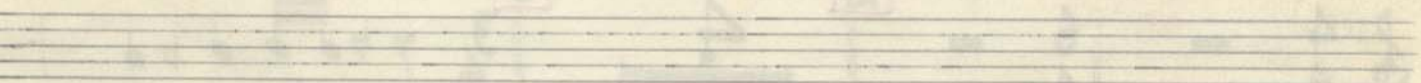
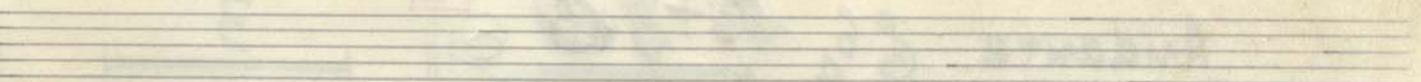
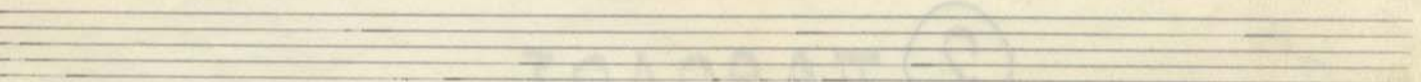
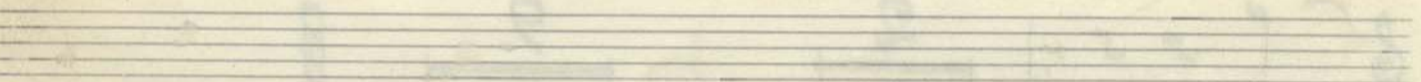
MS 4015 II

I TROMBETTA (B)

II TROMBETTA (B)



„ ΗΡΑΚΛΗΣ „



II ΤΡΟΜΠΕΤΤΑ (B)

(B) ΤΡΟΜΠΕΤΤΑ II

“ Η ΡΑΚΛΗΣ ”

. ΕΥΡΟΠΙΔΟΥ .

Ρ. ΣΙΣΙΛΙΑΝΟΥ

① ΕΙΣΑΓΩΓΗ

MODERATO $\text{♩} \frac{4}{4}$ 2 13 4 1 Rit....

più LENTO $\text{♩} \frac{4}{4}$ 2 *II TEMPO* $\text{♩} \frac{4}{4}$ *ff sfz ff*

mf p più p

pp 2 9

② ΠΑΡΟΔΟΣ

Andante $\text{♩} \frac{6}{4}$ 1 3

2 4 3 *mf*

p

4 *mf cresc... sfz*

Musical staff with time signatures 4/4, 2/4, and 4/4. Includes a circled '4' and a fermata.

5

Musical staff with time signature 4/4, a fermata, and a measure with notes. Includes a circled '6' and the instruction 'soli con sord.'.

Musical staff with notes and a fermata. Includes the instruction 'piu p'.

7

Musical staff with time signatures 4/4, 3/4, and 4/4. Includes a circled '8' and a fermata.

9

Musical staff with time signatures 3/4, 4/4, 3/4, and 4/4. Includes a circled '2' and a fermata.

10

Musical staff with notes and a fermata. Includes the instruction '8^a Bassa' and 'piu p'.

Musical staff with notes and a fermata. Includes the instruction 'Allarg' and 'dim....'.

11

Musical staff with notes and a fermata. Includes the instruction 'ppp' and a circled '11'.

12

Musical staff with notes and a fermata. Includes a circled '12' and the instruction 'mf'.

Musical staff with notes and a fermata. Includes the instruction 'f'.

13

Musical staff with notes and a fermata. Includes a circled '2' and a fermata.

3 B' XOPIKO

Mod^{to} mosso 3/4 1 3 1 5

2 Rubato 4 3 1 4

3 α ΤΕ LENTO 4 3 4 4 Solo p cresc.

4 5 3 4 # 4 # 3

6 7 2 7 2

8 3/4 # 3/4 # 3/4 # 3/4 #

9 3 3 4 3 4 3 4 3 4 3 4

4 3 2 1 2 3 4 5 4 3 2 1

10 5 4 3 2 1 2 3 4 5 4 3 2 1

11 12 Solo 2 2 2 2

2 3/4 2/4 2/4 2/4 2/4 2/4

13 $\frac{4}{4}$ 1 $\frac{3}{4}$ 3 14 5 15 3

16 2 2 - 7

17 2

18 *sfp* *a tempo* *p*

2 3

19 3 2

20 *p* *cresc*

21 *ff* *tacet*

4 I Trompetta tacet

6' **5** F. XOP KO

Andante $\frac{3}{4}$ 5 | 5 | 5

1 3 | 4 - | 3 4 | 4 2

2 *Sosten...*
f *sf p*

Andante **3** 4 | 5 | *Rall...*

4 # *sf p* 3 | 3 | 2 | 4

5 Andante 3 | 2 - | 4 3 | 3 2 | 4

II^a Solo
mf *f*

6 *f* *piu*

7 *cresc...* *Rit...* *ff TEMPO*

mf

8 *p* **9** *f*

10

mp *p* *dim*

2

6 Δ' XOPIKO

Rall.. *ppp*

I *Moo* II Trp Tacet

II *Lento*

f *sfzp*

III *Moo* II Trp. tacet

IV *LENTO* string---

f

All \sharp^o

1

f

2

3

4

v.s.

Handwritten musical score for exercise 6, consisting of four staves. The first staff has a circled '7' above it. The second staff has a circled '5' above it. The third staff has a circled '6' to its left. The fourth staff has a circled '3' above it. The music includes various rhythmic patterns and rests.

20x4

Nº 7

Allegro Tr. Lab

Handwritten musical score for exercise 7, consisting of four staves. The first staff has a circled '7' above it. The music is in 12/8 time and includes dynamic markings such as *ff*, *p*, *mp*, and *pp*.

8 E' XOPIKO

Mod^{to} Drammatico *assai meno*

I^o tempo **1**

2 *Lento, non troppo* *I^o tempo* **3**

Grave **4**

I^o tempo **5**

Più lento *Grave* **6** *I^o Tempo*

πρὸς ὀχί *p*

7'

9 ΣΤ' ΧΟΡΙΚΟ

Lento non troppo

I

1

Sordino

2

3

piu Lento

Solo

4

5

II

Lento, non troppo

6

Sordino

7

molto Lento

III

Lento, non troppo

8

Musical staff with treble clef, 3/4 time signature, and a measure with a fermata. A bracket with the number 2 is above the staff.

9

Musical staff with treble clef, 3/4 time signature, and a measure with a fermata. A bracket with the number 2 is above the staff.

10

Musical staff with treble clef, 3/4 time signature, and a measure with a fermata. A bracket with the number 2 is above the staff. The word *Solo* is written above the staff, and *f* and *p* dynamics are below.

Musical staff with treble clef, 2/4 time signature, and a measure with a fermata. A bracket with the number 2 is above the staff.

20

10

EΞΟΔΟΣ

Andante con moto

I Solo

Musical staff with treble clef, 3/4 time signature, and a measure with a fermata. A bracket with the number 2 is above the staff. The dynamic *p* is below.

Musical staff with treble clef, 3/4 time signature, and a measure with a fermata. A bracket with the number 1 is above the staff. The dynamic *p* is below, and *cresc* is written below the staff.

x 80

Musical staff with treble clef, 3/4 time signature, and a measure with a fermata. A bracket with the number 2 is above the staff.

Molto Lento

Musical staff with treble clef, 3/4 time signature, and a measure with a fermata. A bracket with the number 2 is above the staff. The dynamic *f* is below, and *con dolore* is written below the staff.

Musical staff with treble clef, 3/4 time signature, and a measure with a fermata. A bracket with the number 3 is above the staff. The dynamic *ff* is below, and *Affrettando -- α Tempo* is written below the staff.

Musical staff with treble clef, 3/4 time signature, and a measure with a fermata. A bracket with the number 3 is above the staff. The dynamic *p* is below, and *Rall....* is written below the staff.