

Ms 2975

# DOSSIER

*Trompette in-D*

«ΙΦΙΓ. ΕΝ ΤΑΥΡΟΙΣ»

Μπαμπί Γ. Σιγμάνου



*Crompette in Do*

*Ἐπιχέρεια ἐν ταύροις*

ΜΟΥΣΙΚΗ

J. ΣΙΣΙΛΙΑΝΟΣ



Tromba in Do

No 1 ΕΙΣΑΓΩΓΗ

ΙΦΙΓΕΝΕΙΑ ΕΝ ΤΑΥΡΟΙΣ

Allegro 3/4

ritard molto Assai meno mosso

molto sf f p mf

ten ancora piu lento

No 2

Allegro Moderato pp f fp

No 3. ΠΑΡΟΔΟΣ

Lento ma non troppo pp f fp



6

*Allegretto Moderato*  $\text{C}$  *tratten.*

*a tempo*

*Solo*  
*Ritenuendo* *pp* *dim.* *Lento ma non troppo* *p* *pp*

$\frac{3}{8}$  *pppp*

3 3 3

8

9

3 3 3

3 5

10

*Allegro Appassionato* *mf* *pp* *f* *f* *p*

11

*Piu Mosso* *mf* *mf* *dimin.* *p*

2 2 2

12

*Tempo precedente*

*Allo Appassionato*

13

$\text{C}$  3

*Piu Mosso* *f* *sfp* *molto* *f*

*a tempo*

*Ritem.*

*Largo*

*p*

14

*pochissimo più mosso*

*poco*

*a tempo*

*Poco più mosso*

15

*Andante mosso*

*p espress.*

*pp*

*p*

*poco cresc.*

*p*

*cresc. - - - en - do - - - poco*

*Allegro ma non troppo*

*a - po - co - - - ff*

16

*Più allegro*

*Più Allegro*

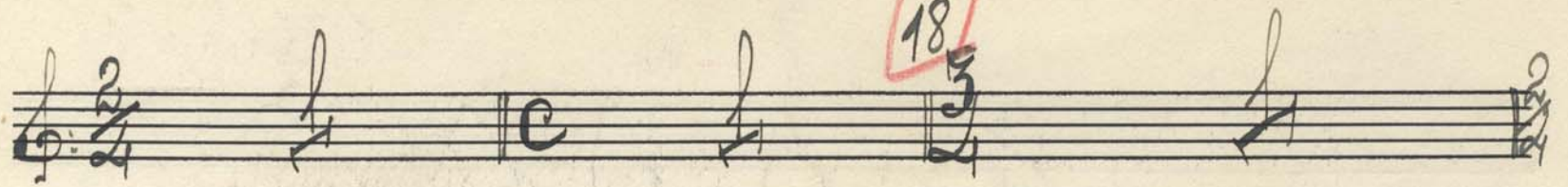
17

*Un poco meno*



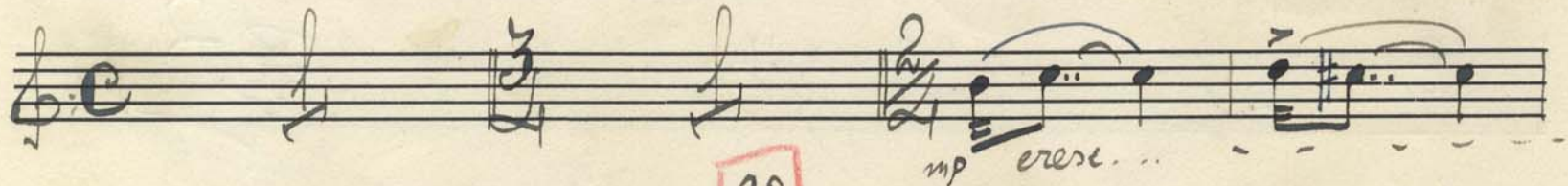
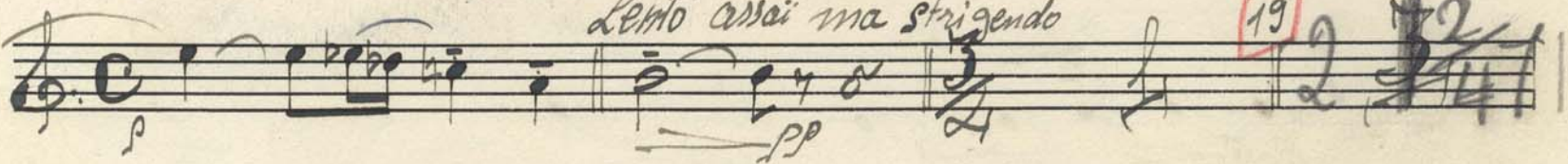
v. 8

18



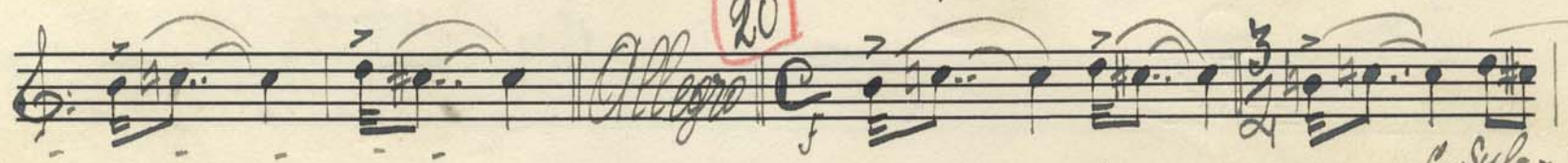
Lento assai ma stringendo

19

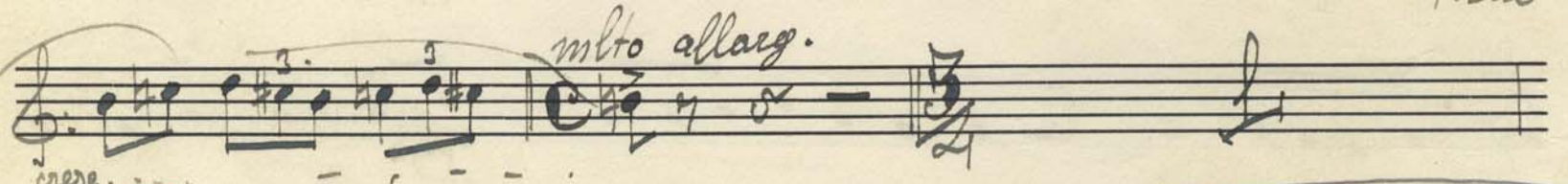


20

Allegro



molto allarg.



21



poco stringenzo



22

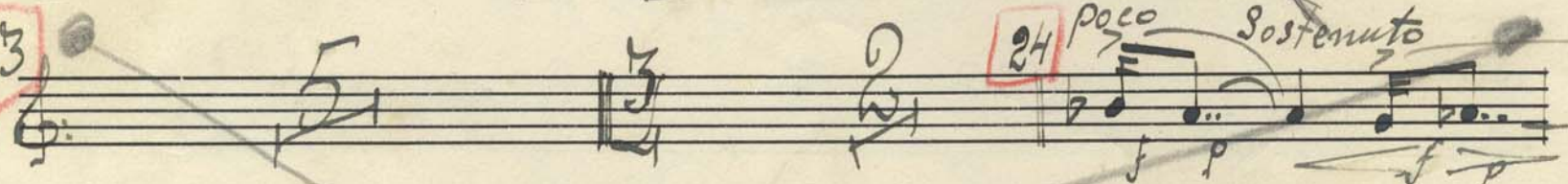
Piu mosso e sempre stringendo



23

24

poco Sostenuto

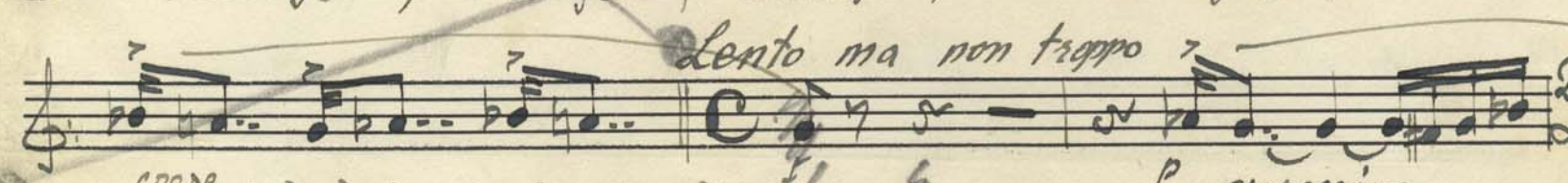


a tempo

sempre stringendo



Lento ma non troppo



cresc.

p espressivo

Handwritten musical notation for measures 24-25. Measure 25 is circled in red. The notation includes treble and bass staves with various notes, rests, and dynamic markings.

**№ 4. A. ΣΤΑΣΙΜΟ**

*Largamente*  $\frac{12}{8}$   $\frac{3}{8}$   $\frac{9}{8}$  **26** Solo *FF* *p*

Handwritten musical notation for measures 26-27. Measure 26 is circled in red. The notation includes treble and bass staves with notes and rests.

$\frac{12}{8}$   $\frac{6}{8}$   $\frac{12}{8}$

Handwritten musical notation for measures 28-29. Measure 28 is circled in red. The notation includes treble and bass staves with notes and rests.

**27** **28** *Un poco mosso* *A tempo* *fp*

Handwritten musical notation for measures 28-29. Measure 28 is circled in red. The notation includes treble and bass staves with notes and rests.

**29** *Stringendo - Solo* *F* *p*

Handwritten musical notation for measures 29-30. Measure 29 is circled in red. The notation includes treble and bass staves with notes and rests.

*atempo* *F* *p*

Handwritten musical notation for measures 30-31. Measure 30 is circled in red. The notation includes treble and bass staves with notes and rests.

**30** *Un poco piu mosso* **31** *Sordina* *pp* *molto*

Handwritten musical notation for measures 30-31. Measure 30 is circled in red. The notation includes treble and bass staves with notes and rests.

*molto* *fp* *fp* *fp* *pu p* *pp* *Piu lento*

Handwritten musical notation for measures 31-32. Measure 31 is circled in red. The notation includes treble and bass staves with notes and rests.

**32** *Piu mosso*

Handwritten musical notation for measures 32-33. Measure 32 is circled in red. The notation includes treble and bass staves with notes and rests.

V. S.

*solo* *mf* *ten* *ten* *F* *F*

**33** *mf* *Piu lento* *a tempo*

*12/8* *Poco piu mosso* **34** *12/8* *6/8* *12/8*

*12/8* *Ancora piu mosso* **35** *a tempo* *p* *molto*

*a tempo* *f* *p* *f* *mf sub.* *dimi...* *muendo* *rit...* *pp*

*lento* *rit.* *Non Solo.*

**36** *poco sf* *rit.* *p* *sf* *p* *3 fois (3 fois)*

N<sup>o</sup> 5. Tacet

N<sup>o</sup> 6.

B! ΣΤΑΣΙΜΟ

*Sordino* *Lento e grave* *un poco rubato*

*Solo* *pp*

1

(Solo)

2

3

(Solo)

4

5

Sord.

*Fu mosso* Con Sord.

Via Sord. Solo Senza Sord.

6

Solo

7

8

~~Con Sord.~~

V. S.



8

~~Sord.~~ Sord.

9

Solo

10

11

12

13



N<sup>o</sup> 8.

Γ. ΣΤΑΣΙΜΟ

Handwritten musical score for a piece titled "N<sup>o</sup> 8" and "Γ. ΣΤΑΣΙΜΟ". The score is written on ten staves, starting with a treble clef, a key signature of one sharp (F#), and a common time signature (C). The music features various dynamics such as *p*, *mp*, *f*, and *pp*, and includes performance instructions like "Solo", "Poco più mosso", and "Con Sord.". The notation includes notes, rests, and complex rhythmic patterns, with some measures marked with "3" or "5" indicating triplets or quintuplets. The piece concludes with a double bar line and a common time signature.

*Con Sord.* I Tempo *Adagio*

*pp* *I<sup>o</sup> Tempo*

*Senza Sord.* *p*

*Solo* *p mf.* *Piu lento*

N<sup>o</sup> 9.

**I** E E O Δ O E

Mod<sup>to</sup> ma energico

**II** Andante

*Sordano* *p dolce*

*V. Pronto*  
*Solo Corno*

III

Solo no *Andante*  
Corno FA

IV

*Andante solenne*

*Piu mosso*

*I.º Tempo*

*Piu Lento*

Judith  
20/8/16

*Fine*