



CLAR. BAS.

Andante sereno (♩: 72)

11 Poco sost.

First musical staff with notes, rests, and dynamic markings like *F*.

a tempo , Poco sosten. accel. a tempo 12 Più animato.

Second musical staff with notes, rests, and dynamic markings like *fp*, *ff*, and *F*.

13

Più mosso (♩: 96) Allegro non troppo

Third musical staff with notes, rests, and dynamic markings like *ff*, *sff*, and *ff*.

14

Fourth musical staff with notes, rests, and dynamic markings like *sff*.

Rit. . . 15 a tempo L'istesso tempo (♩: 116)

Fifth musical staff with notes, rests, and dynamic markings like *ff*, *sff*, and *pp poco cresc. ff sub*.

16

Sixth musical staff with notes, rests, and dynamic markings like *pp poco cresc. ff sub.* and *mf*.

17

18 Più mosso (♩: 132)

Seventh musical staff with notes, rests, and dynamic markings like *sf*, *ff*, *sf*, *sf*, *sf*, *sf*, and *sf*.

A tempo (♩: 116) 19

Eighth musical staff with notes, rests, and dynamic markings like *sf*, *sf*, *sff*, and *sff*.

20

Ninth musical staff with notes, rests, and dynamic markings like *ff*, *ff*, and *f espr.*

21

Tenth musical staff with notes, rests, and dynamic markings like *F*.

22

Eleventh musical staff with notes, rests, and dynamic markings like *ff*.

23 Più mosso (♩: 122)

Twelfth musical staff with notes, rests, and dynamic markings like *F cresc.* and *ff*.

CLAR. BAS.

24 a tempo (♩: 116)

25

26

poco sost. 27 Più mosso (♩: 122) Andante sereno (♩: 72)

28 29 Più animato 30 All<sup>ro</sup> non troppo (♩: 116)

Lento (♩: 52)

31 Agitato (♩: 116) Lento 32 Agitato

33 Pesante (♩: 72)

34 Rall.

Allegro preciso (♩: 144) 35

CLAR. BAS.

4-

> Solo

36

mf leggero

F FF

37

fff

ff

mf

p

p

F

fp

38

mf

ff

F

fff

39

> Solo

40

p legg.

F

FF

fff

ff

TRIO

Andante (♩:72)

FINE

p sub. dolce

41

FF sub.

p dolce.

Solo (♩:60)

FF sub.

p dolce

42

Allarg.

Più mosso (♩:80)

Andante 43

allarg..

FF

mf

(allarg)

string.

a tempo

2. Rit.

p cresc.

(cresc)

FF

mf

mf

F

FF

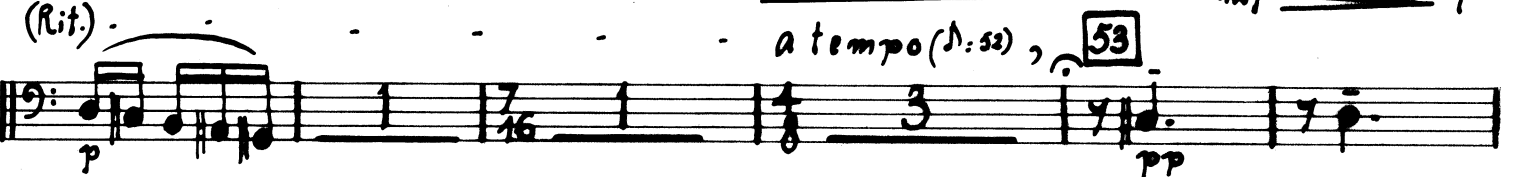
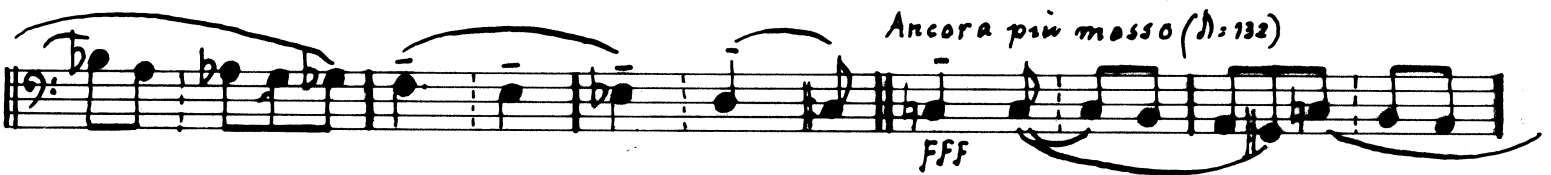
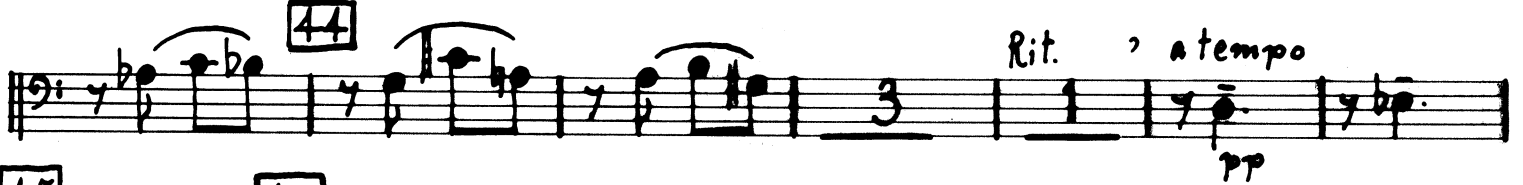
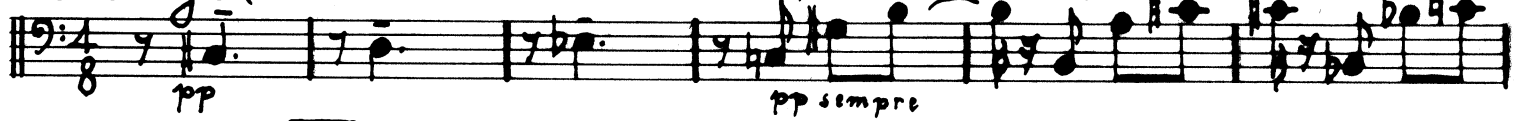
mf

FF

D.C. al FINE



Largo (♩:52)



IV.

Allegro vivacissimo (♩:160)

54

54

55

56

57

58

59

60

61

62

*f*

*mf*

*f*

*f*

*F un poco pesante*

*f cresc.*

*fff*

*f*

*fff*

*fff*

*fff*

*fff*

*fff*

Musical staff with bass clef, 2/4 time signature. It begins with a  $b^0$  dynamic marking and a  $fff$  dynamic marking. The staff contains several measures of music with various note values and rests.

63 Allegro con fuoco (alla breve,  $\text{♩} = 112$ )

Musical staff for exercise 63. It starts with a  $ff$  dynamic marking and ends with an  $f$  dynamic marking. The staff contains several measures of music.

64 I° Tempo ( $\text{♩} = 160$ )

Musical staff for exercise 64. It features a  $ff$  dynamic marking. The staff contains several measures of music.

65 Alla breve (come prima,  $\text{♩} = 112$ )

Musical staff for exercise 65. It features  $ff$  and  $f$  dynamic markings. The staff contains several measures of music.

66 Più mosso ( $\text{♩} = 116$ )

Musical staff for exercise 66. It features  $ff$  dynamic markings and an *allarg. molto.* marking. The staff contains several measures of music.

(allarg.) Lento ( $\text{♩} = 52$ ) I° Tempo ( $\text{♩} = 160$ )

Musical staff for exercise 66 continuation. It features  $ff$  dynamic markings. The staff contains several measures of music.

67 Presto ( $\text{♩} = 184$ )

Musical staff for exercise 67. It features  $ff$  dynamic markings. The staff contains several measures of music.

string... 68 Alla breve ( $\text{♩} = 112$ )

Musical staff for exercise 68. It features  $fff$  dynamic marking and the instruction *pesante e molto sostenuto*. The staff contains several measures of music.

69

Musical staff for exercise 69. It features  $p$ , *molto*, and  $fff$  dynamic markings. The staff contains several measures of music.

Musical staff for exercise 69 continuation. It features  $fff$ ,  $p$ , *molto*, and  $fff$  dynamic markings. The staff contains several measures of music.

70 Prestissimo

Musical staff for exercise 70. It features  $fff$ ,  $mf$ , *molto*, and  $fff$  dynamic markings. The staff contains several measures of music.